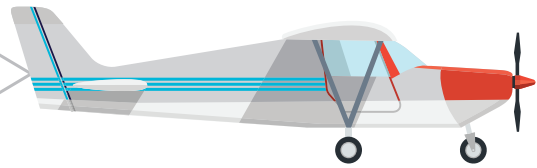


Annual Enrollment

Nov. 18 – Dec. 4

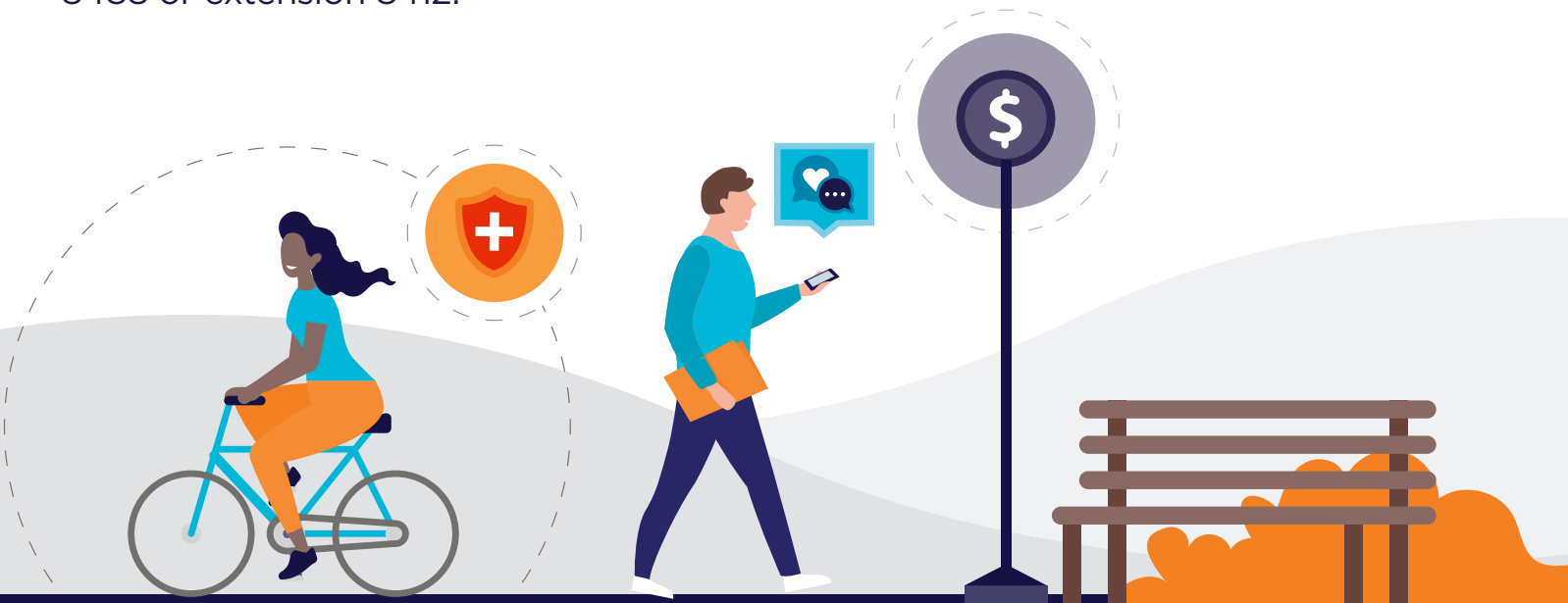


Special **Saturday Event** For Annual Enrollment

The Benefits office will conduct a special enrollment event on November 21, 2020 from 8:00am to 1:00pm at Building 1. Employees will be assisted on a first-come, first-served basis.

Please be sure to wear your mask or face covering and have your gdbenefits.com username and password ready when visiting the Benefits office.

If you have any questions you may contact the Benefits department at extension 8488 or extension 8412.



Medical • Dental • Income Protection • Voluntary Benefits